



# Podtech™ Modular Data Center Solutions

Rapid Deployment. Infinite Scalability. Factory Precision.

Engineered for the Future of Infrastructure.





## Who is Podtech™?

Podtech provides a unique infrastructure that enables the building of flexible modular data centers of any scale.

**Our Mission:**

**OYD**

# The Infrastructure Bottleneck



**Rigidity:** Built for fixed compute, no room for agile expansion.



**Space Constraints:** Traditional builds fail to maximize real estate.



**Capital Strain:** Heavy upfront CapEx restricts growth.



# POD<sup>+</sup>TECH™

**Factory Prefabricated**

**Infinite Scalability**

**Seismic Design**

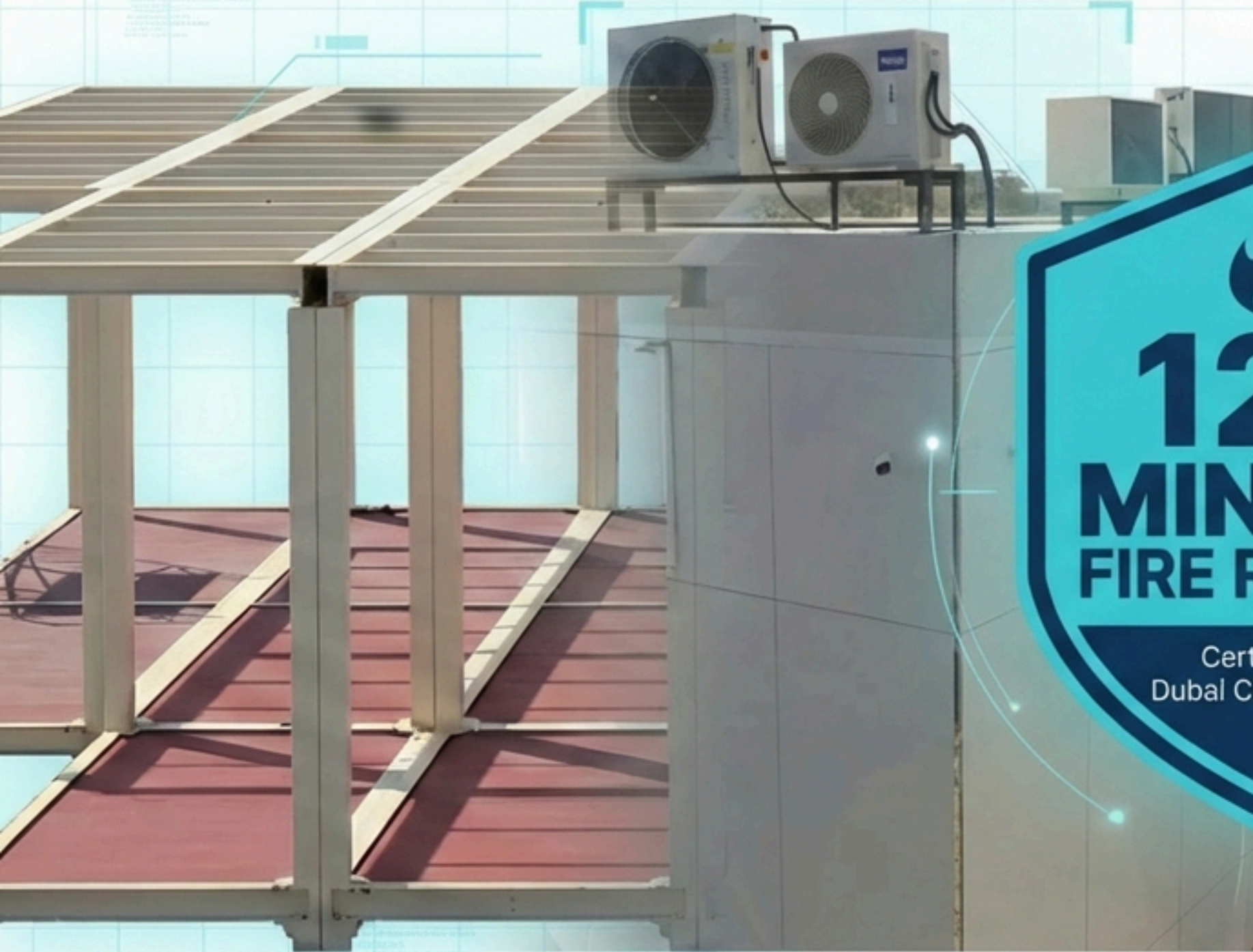


## Podtech's Modular Foundation

Prefabricated • Scalable •  
Modular • Flexible

Podtech's infrastructure can be utilized to construct modular data centers of various densities rapidly. These podules are constructed & tested in factories, making them operational on deployment.





## The Shell: Fortified Integrity

- **Wall Structure:** Multi-layer composition including Aluminum Composite Panel, Fiber Cement Board, and Rock Wool insulation.
- **Weather Resilience:** IP68-certified capabilities; thermally contained and built for extreme climates.

# The Systems: Plug-and-Play Intelligence

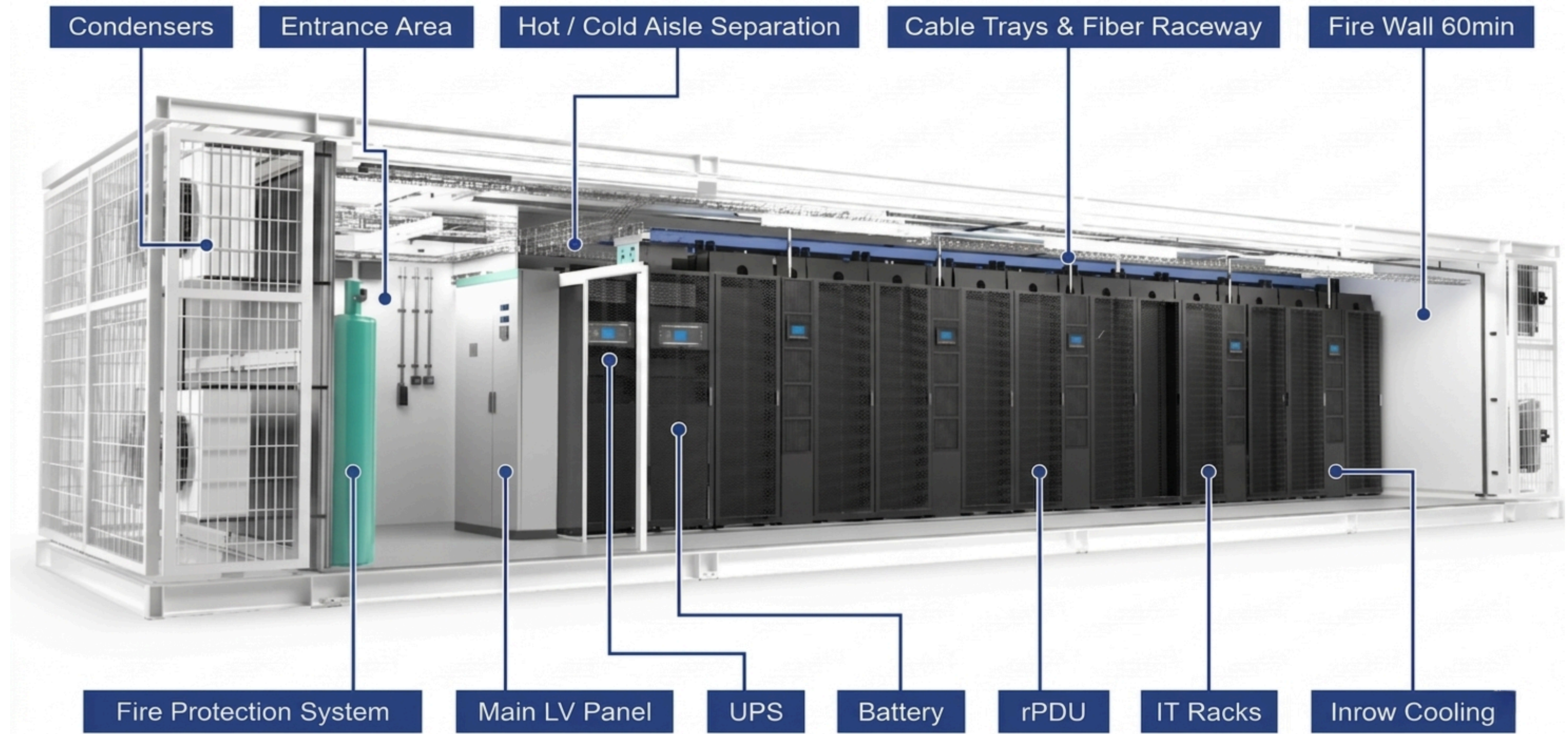


**Factory Tested:** Power-up tested before shipping for zero construction delays.



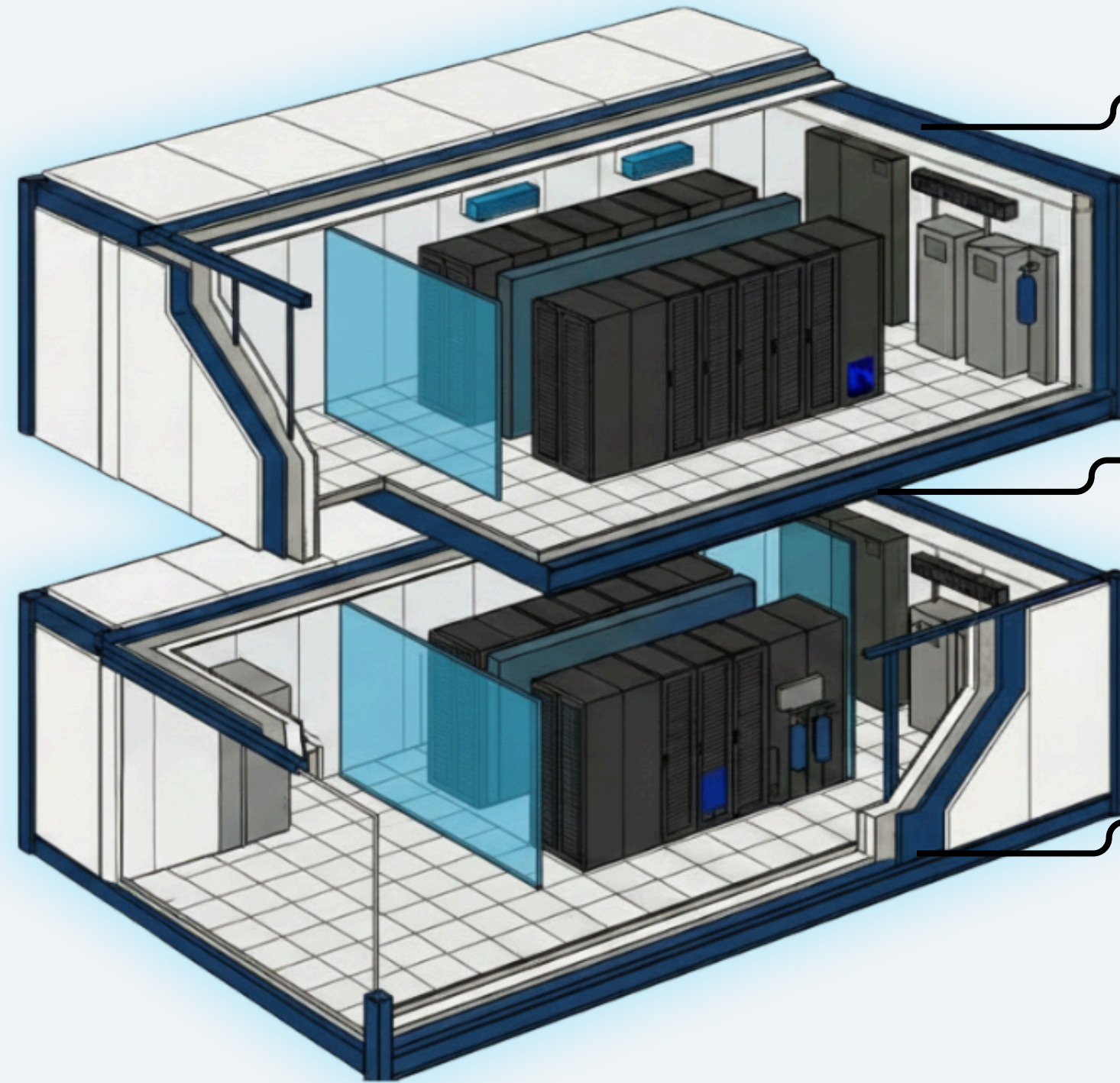
**Cooling:** Enclosed hot/cold aisle separation with In-Row or CRAC/PAC options.

# Fully Integrated: Pre-installed, MEP, Fire Suppression, and IT infrastructure.



# Density: G+1 Vertical Expansion

Double the  
Compute,  
Same  
Footprint.



● **Space Efficiency:** Ideal for constrained urban environments.

● **Structural Capacity:** Roof-mounted cooling compatibility.

● **Modularity:** Vertical or horizontal expansion on demand.

# Technical Advantage & Efficiency



## Power & Cooling

High-density support, Low PUE design, In-Row or CRAC/PAC cooling.

## Efficiency

Advanced thermal containment via sealed aisle separation.

## Sustainability

Compatible with renewable energy sources (Solar ready).

## Resilience

Weather-resistant, fire-resistant, and seismically designed.

# Scale on Demand

## From Single Unit to Global Footprint

### Single-Pod

Self-contained units holding all necessary infrastructure for immediate needs.

### Multi-Pod

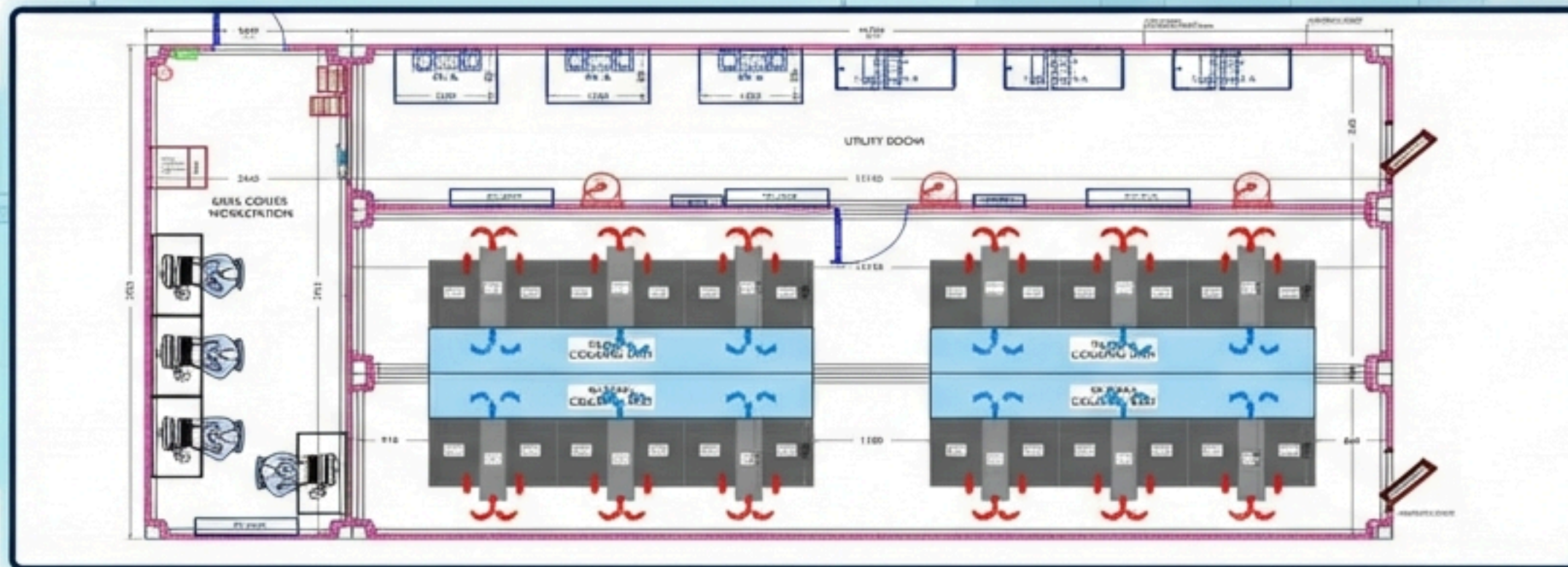
Interconnected clusters that grow as your data demands grow.

**The Advantage:** Factory-built and tested units ensure your infrastructure is operational the moment it is deployed.

# Sample Technical Drawings



Single 40' Modular Data Center Pod (10kW x 6 Nos)



Multi-Pod Configuration (10kW x 24 Nos)

# Major Project References of Podtech

- **ITI, Trimax Data Centre, Bangalore**
- **ICICI Data Centre, Jaipur (Through HP)**
- **Nxtra, Pune**
- **NSE Mumbai**
- **UAE Defense Projects**



# POD**+**TECH™

Modular Data Center Solutions.



804, Shadow Tower, Corniche Road, Al Mamzar. Sharjah PO Box 118672.



+971 50 308 8452



[info@podtechdatacenter.com](mailto:info@podtechdatacenter.com)